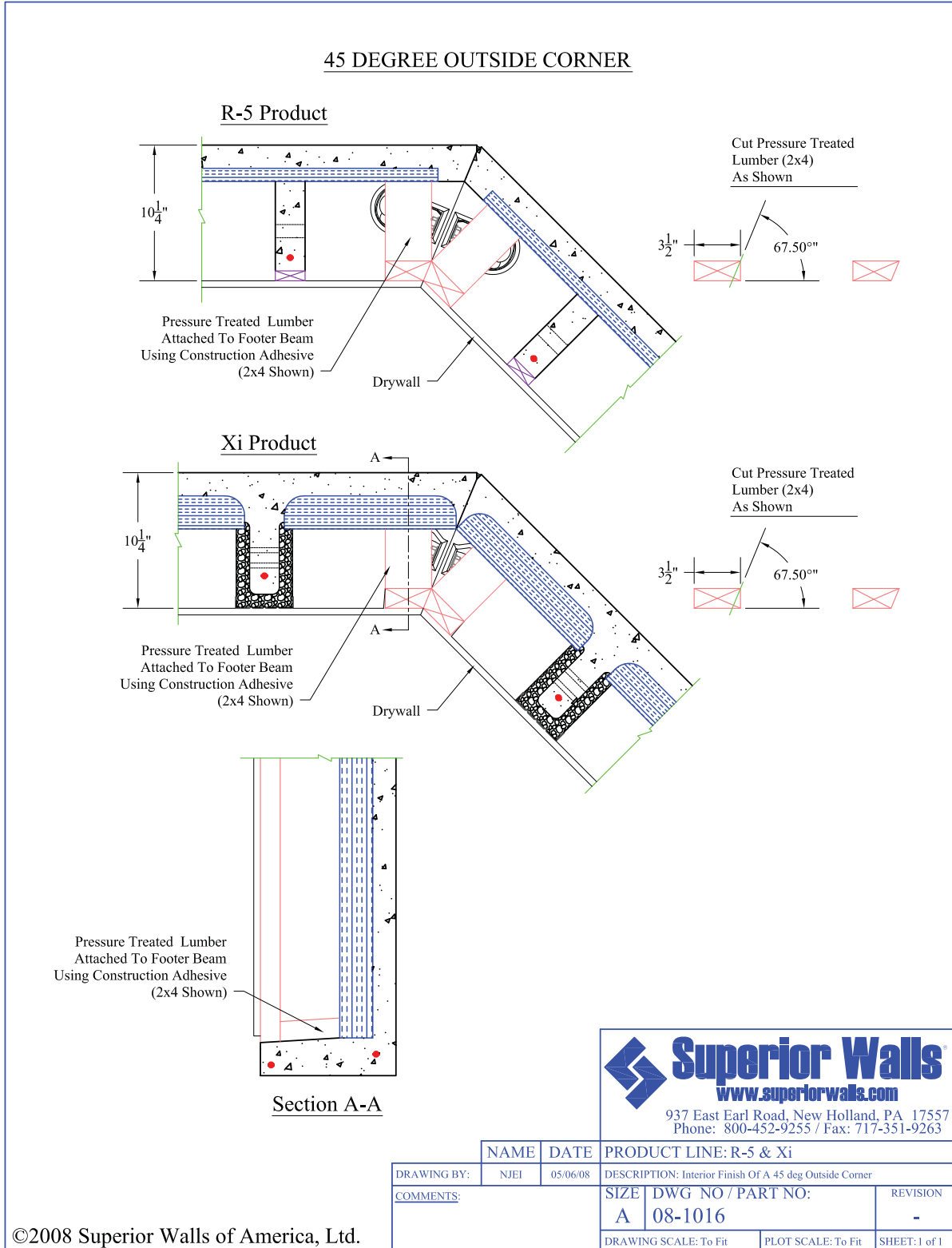


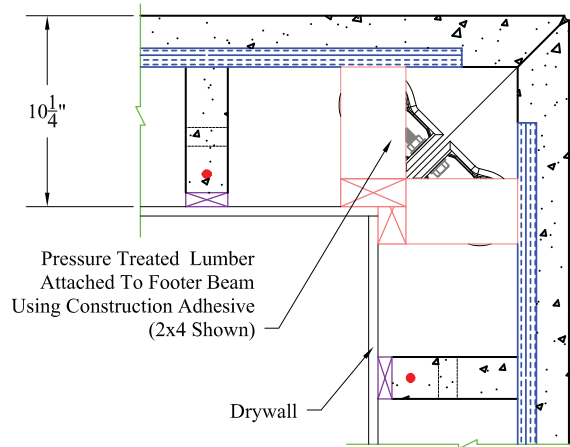
DRYWALL BLOCKING DETAILS

The following details provide possible methods that may be used to frame up the corners of Superior Walls panels for attaching drywall. A similar method or the combination of bolted 2x6 pressure treated studs (to the sides of the Superior Walls studs using the precast chase holes) with horizontal blocking pieces can be used to create points of attachment for heavy items such as television mounts or shelving. Any required additional blocking or nailers should be installed prior to drywalling.

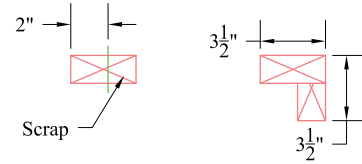


90 DEGREE OUTSIDE CORNER

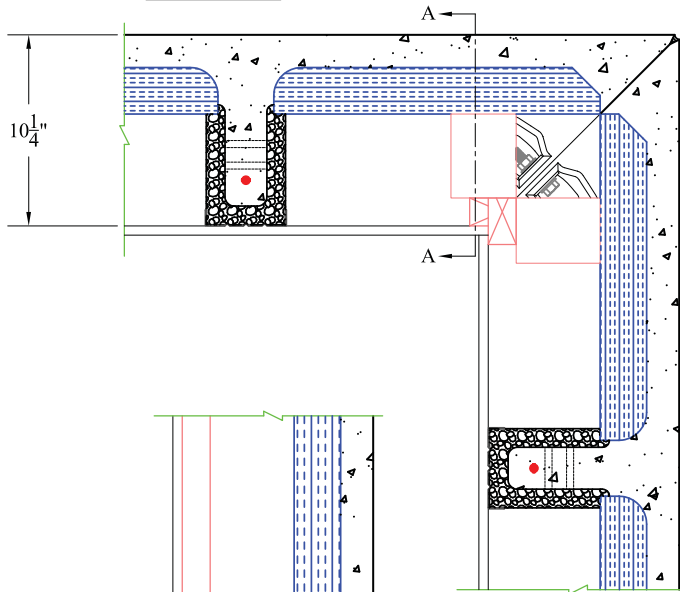
R-5 Product



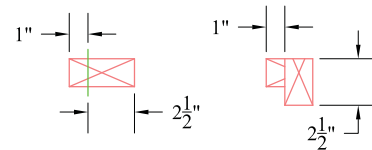
Cut Pressure Treated Lumber (2x4) As Shown



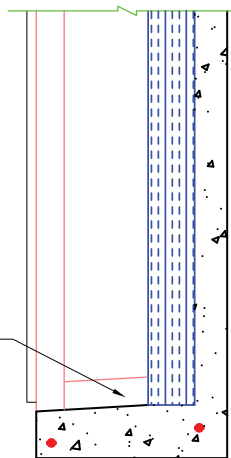
Xi Product



Cut Pressure Treated Lumber (2x4) As Shown



Pressure Treated Lumber Attached To Footer Beam Using Construction Adhesive (2x4 Shown)



Section A-A

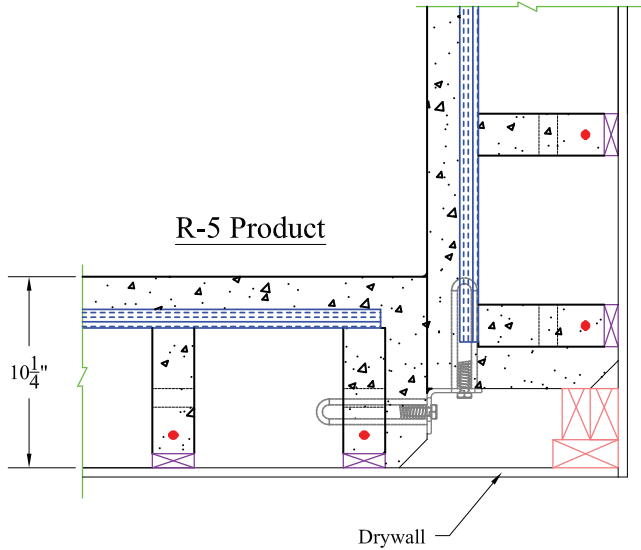


937 East Earl Road, New Holland, PA 17557
Phone: 800-452-9255 / Fax: 717-351-9263

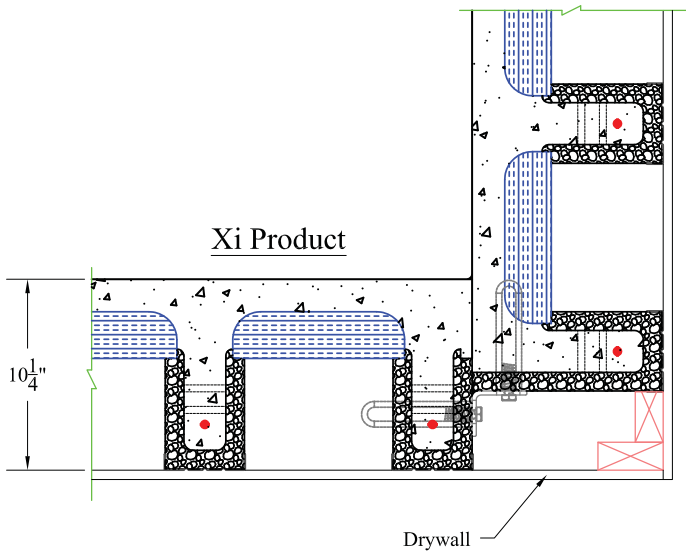
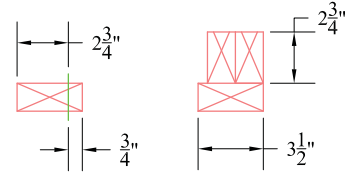
	NAME	DATE	PRODUCT LINE: R-5 & Xi	
DRAWING BY:	NJEI	05/12/08	DESCRIPTION: Interior Finish Of A 90 deg Outside Corner	
COMMENTS:			SIZE	DWG NO / PART NO:
			A	08-1017
			DRAWING SCALE: To Fit	PLOT SCALE: To Fit
			REVISION	
			-	
			SHEET: 1 of 1	

©2008 Superior Walls of America, Ltd.

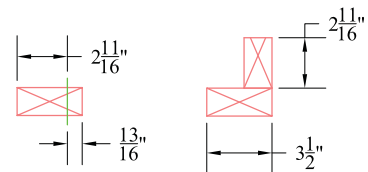
90 DEGREE INSIDE CORNER



Cut Pressure Treated Lumber (2x4)
As Shown



Cut Pressure Treated Lumber (2x4)
As Shown



©2008 Superior Walls of America, Ltd.

Superior Walls
www.superiorwalls.com
937 East Earl Road, New Holland, PA 17557
Phone: 800-452-9255 / Fax: 717-351-9263

	NAME	DATE	PRODUCT LINE: R-5 & Xi	
DRAWING BY:	NJEI	05/13/08	DESCRIPTION: Interior Finish Of A 90 deg Inside Corner	
COMMENTS:	SIZE	DWG NO / PART NO:	REVISION	
	A	08-1018	-	
	DRAWING SCALE: To Fit	PLOT SCALE: To Fit	SHEET: 1 of 1	